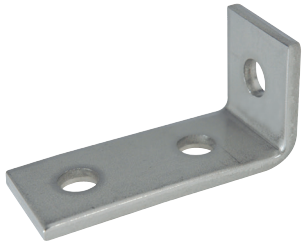
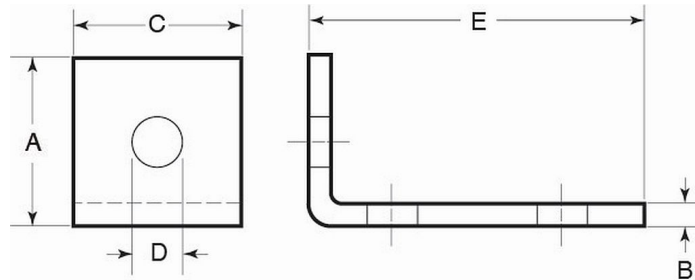
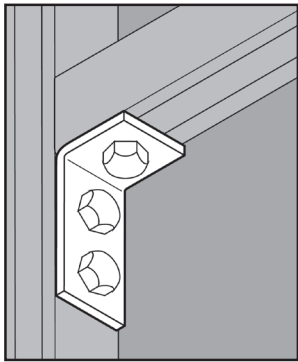


STAINLESS STEEL 3-HOLE 90° ANGLE



APPLICATION

- Used to support and make various connections in strut systems
- 90° angles offered in 2-hole, 3-hole and 4-hole styles
- Manufactured in stainless steel to help prevent corrosion
- Can be installed using ordinary hand tools and require little maintenance or repair
- Provided in a bright, polished finish that does not require touch up or painting



PRODUCT DETAILS

Material:
316 SS

Standards:
ASTM A240

Country of Origin:
100% Made in USA

Part Number	Weight/ 100 (lbs.)	Dimension (in.)				
		A	B	C	D	E
5974	59	2.00	0.25	1.63	0.56	3.88



© 2018 GIBSON STAINLESS & SPECIALTY, INC. - REV 3/2018

PO BOX 847, GREENSBURG, PA 15601
PHONE: 1-800-945-4316 • FAX: 724-838-1544

WEB: GIBSONSTAINLESS.COM