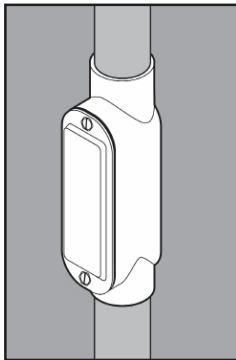
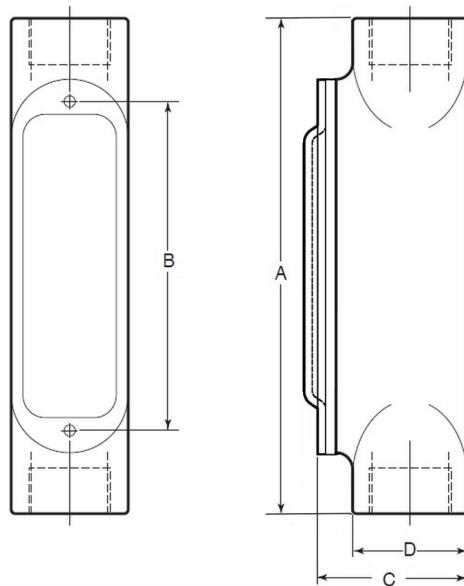


STAINLESS STEEL C CONDUIT BODIES



APPLICATION

- Designed to make 90° turns, change the route of conduit, and/or to make wiring pulls and connections
- Flat back design provides extra wiring capacity
- Form 8
- Offered in seven configurations: C, LB, LL, LR, T, TB, X
- Supplied complete with cover, gasket and Type 316 SS screws
- Manufactured in stainless steel to help prevent corrosion
- Can be installed using ordinary hand tools and require little maintenance or repair
- Provided in a bright, polished finish that does not require touch up or painting



PRODUCT DETAILS

Material:

- Body: CF8M (316 SS)
- Cover, Screws: 316 SS
- Gasket: Neoprene

Country of Origin:

100% Made in USA

UL File Number:

QCIT.E300676
(Standard 514A)

Canada UL File Number:

DWTT7.E300676
(Standard 514A)

Part Number	Conduit Size	Weight/ Each (lbs.)	Dimension (in.)			
			A	B	C	D
7050C	½ in.	1	6.00	3.50	1.65	1.19
7075C	¾ in.	2	6.81	4.31	1.99	1.51
7100C	1 in.	3	8.00	5.00	2.35	1.77
7125C*	1-¼ in.	5	9.13	6.00	2.86	2.14
7150C	1-½ in.	4	9.42	6.58	3.14	2.15
7200C	2 in.	9	11.60	8.50	3.82	2.73

*7125C not yet UL Listed.

