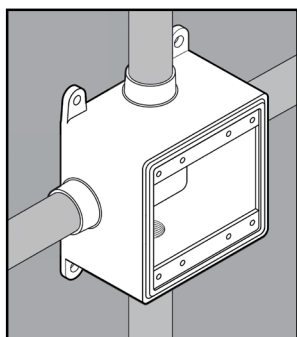


STAINLESS STEEL DOUBLE-GANG FDDX DEVICE BOX



APPLICATION

- Used to wire devices such as switches and receptacles, act as pull boxes, and/or connect conduit
- Offered in "deep" style, in eight configurations: Single-Gang FD, FDC, FDA, FDS, FDX, FDCT and Double-Gang FDDC, FDDX.
- Manufactured in stainless steel to help prevent corrosion
- Can be installed using ordinary hand tools and require little maintenance or repair
- Provided in a bright, polished finish that does not require touch up or painting



PRODUCT DETAILS

Material:

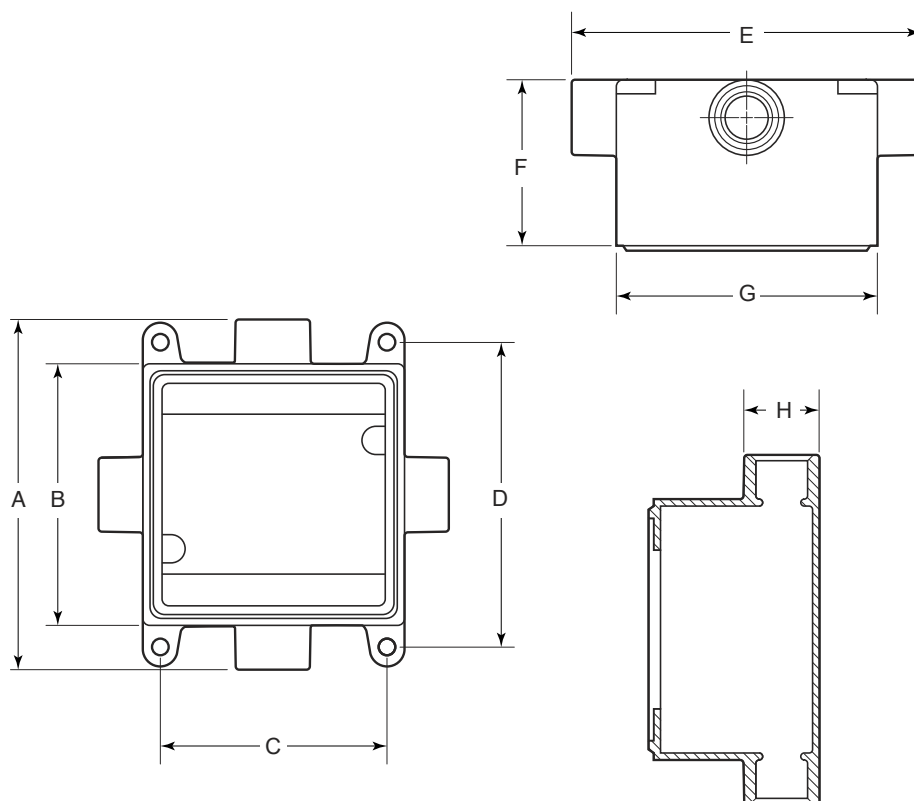
- Body: CF8M (316 SS)
- Grounding Screw: 316 SS

Country of Origin:

100% Made in USA

UL File Number:

QCIT.E300676
(Standard 514A)



Part Number	Size	Weight/ Each (lbs.)	Dimension (in.)							
			A	B	C	D	E	F	G	H
FDDX75	¾ in.	5	6.59	4.65	4.03	5.50	6.59	2.94	4.65	1.34



© 2025 GIBSON STAINLESS & SPECIALTY, INC. - REV 01/2025

PO BOX 847, GREENSBURG, PA 15601
PHONE: 1-800-945-4316 • FAX: 724-838-1544
WEB: GIBSONSTAINLESS.COM