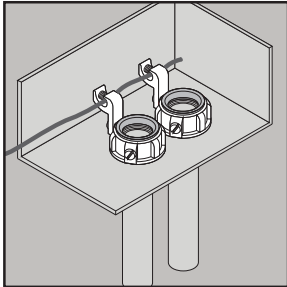
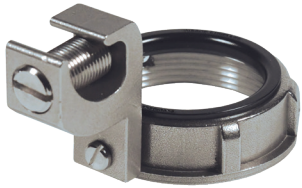


STAINLESS STEEL GROUNDING BUSHINGS



APPLICATION

- Designed for use with threaded conduit to terminate runs
- Insulating plastic ring provides smooth surface for wire pulls
- Provided with grounding lug and screw to ensure secure connection for ground wiring
- Type 316 SS grounding lugs offered in two sizes to accommodate the following wire ranges:
 - 4-14 AWG
 - 3/0-6 AWG
- Manufactured in stainless steel to help prevent corrosion
- Can be installed using ordinary hand tools and require little maintenance or repair
- Provided in a bright, polished finish that does not require touch up or painting

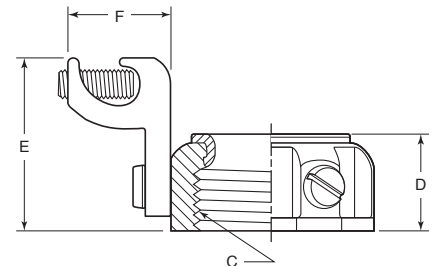
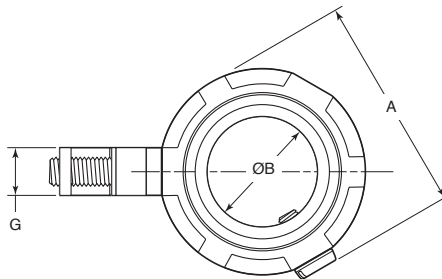
PRODUCT DETAILS

Material:

- Bushing: CF8M (316 SS)
- Insulating Ring: Polyetherimide (PEI) Thermoplastic
- Lug: CF8M (316 SS)
- Grounding Screw: 316 SS

Country of Origin:

100% Made in USA



Part Number	Size	Wire Range	Weight/100 (lbs.)	Dimension (in.)						
				A	B	C	D	E	F	G
GB50-S	½ in.	4-14 AWG	17	1.32	0.58	½ - 14 NPSM	0.71	1.38	0.88	0.44
GB75-S	¾ in.	4-14 AWG	20	1.58	0.75	¾ - 14 NPSM	0.73	1.41	0.88	0.44
GB100-S	1 in.	4-14 AWG	25	1.83	0.95	1 - 11-½ NPSM	0.83	1.48	0.88	0.44
GB125-S	1-¼ in.	4-14 AWG	22	2.09	1.28	1-¼ - 11-½ NPSM	0.83	1.48	0.88	0.44
GB150-S	1-½ in.	4-14 AWG	25	2.34	1.50	1-½ - 11-½ NPSM	0.83	1.48	0.88	0.44
GB200-S	2 in.	4-14 AWG	32	2.84	1.90	2 - 11-½ NPSM	0.83	1.48	0.88	0.44
GB50-L	½ in.	3/0-6 AWG	45	1.32	0.58	½ - 14 NPSM	0.71	2.11	1.50	0.80
GB75-L	¾ in.	3/0-6 AWG	48	1.58	0.75	¾ - 14 NPSM	0.73	2.14	1.50	0.80
GB100-L	1 in.	3/0-6 AWG	53	1.83	0.95	1 - 11-½ NPSM	0.83	2.20	1.50	0.80
GB125-L	1-¼ in.	3/0-6 AWG	50	2.09	1.28	1-¼ - 11-½ NPSM	0.83	2.20	1.50	0.80
GB150-L	1-½ in.	3/0-6 AWG	53	2.34	1.50	1-½ - 11-½ NPSM	0.83	2.20	1.50	0.80
GB200-L	2 in.	3/0-6 AWG	60	2.84	1.90	2 - 11-½ NPSM	0.83	2.20	1.50	0.80

