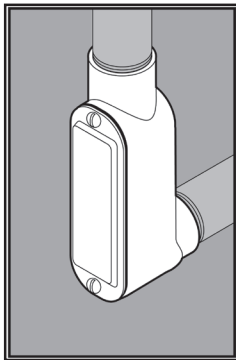
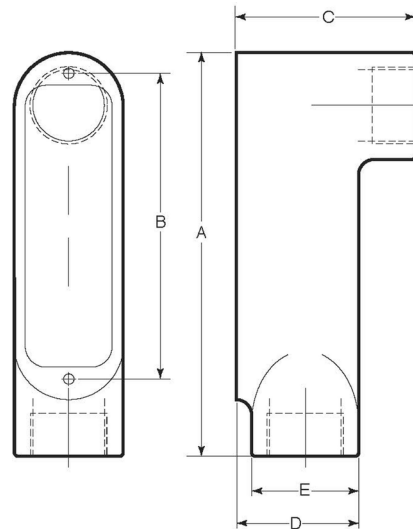


# STAINLESS STEEL LB CONDUIT BODIES



## APPLICATION

- Designed to make 90° bends, change the route of conduit, and/or to make wiring pulls and connections
- Flat back design provides extra wiring capacity
- Form 8
- Offered in seven configurations: C, LB, LL, LR, T, TB, X
- Supplied complete with cover, gasket and Type 316 SS screws
- Manufactured in stainless steel to help prevent corrosion
- Can be installed using ordinary hand tools and require little maintenance or repair
- Provided in a bright, polished finish that does not require touch up or painting



## PRODUCT DETAILS

### Material:

- Body: CF8M (316 SS)
- Cover, Screws: 316 SS
- Gasket: Neoprene

**Country of Origin:** 100%  
Made in USA

### UL File Number:

QCIT.E300676  
(Standard 514A)

### Canada UL File Number:

DWTT7.E300676  
(Standard 514A)

Part Number	Conduit Size	Weight/ Each (lbs.)	Dimension (in.)				
			A	B	C	D	E
7050LB	½ in.	1	4.86	3.50	2.05	1.34	1.18
7075LB	¾ in.	2	5.80	4.31	2.50	1.63	1.50
7100LB	1 in.	3	6.63	5.00	2.83	2.00	1.75
7125LB	1-¼ in.	5	7.75	6.00	3.50	2.49	2.15
7150LB	1-½ in.	5	8.43	6.58	3.72	2.73	2.33
7200LB	2 in.	9	10.55	8.50	4.38	3.38	2.75
7250LB	2-½ in.	9	12.65	9.75	6.08	4.25	3.26
7300LB	3 in.	18	13.58	11.25	6.13	4.63	4.04
7400LB	4 in.	28	16.60	13.75	7.20	5.56	5.13

