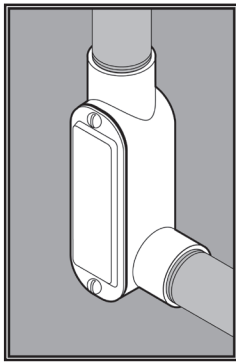


# STAINLESS STEEL LR CONDUIT BODIES



## APPLICATION

- Designed to make 90° turns, change the route of conduit, and/or to make wiring pulls and connections
- Flat back design provides extra wiring capacity
- Form 8
- Offered in seven configurations: C, LB, LL, LR, T, TB, X
- Supplied complete with cover, gasket and Type 316 SS screws
- Manufactured in stainless steel to help prevent corrosion
- Can be installed using ordinary hand tools and require little maintenance or repair
- Provided in a bright, polished finish that does not require touch up or painting

## PRODUCT DETAILS

### Material:

- Body: CF8M (316 SS)
- Cover, Screws: 316 SS
- Gasket: Neoprene

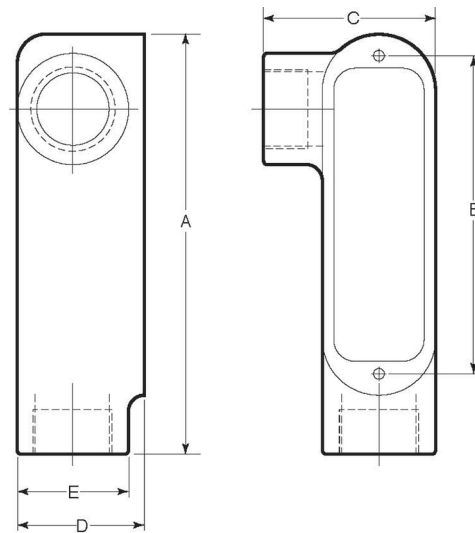
**Country of Origin:** 100%  
Made in USA

### UL File Number:

QCIT.E300676  
(Standard 514A)

### Canada UL File Number:

DWTT7.E300676  
(Standard 514A)



Part Number	Size	Weight/ Each (lbs.)	Dimension (in.)				
			A	B	C	D	E
7075LR	¾ in.	2	5.72	4.31	2.43	1.63	1.50
7100LR	1 in.	3	6.58	5.00	2.65	2.00	1.75
7150LR	1-½ in.	4	8.40	6.58	3.53	2.73	2.15
7200LR	2 in.	7	10.55	8.50	4.22	3.36	2.73

