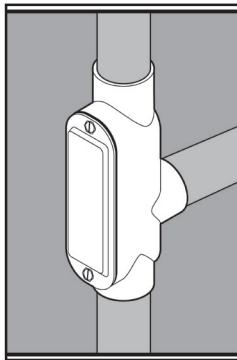
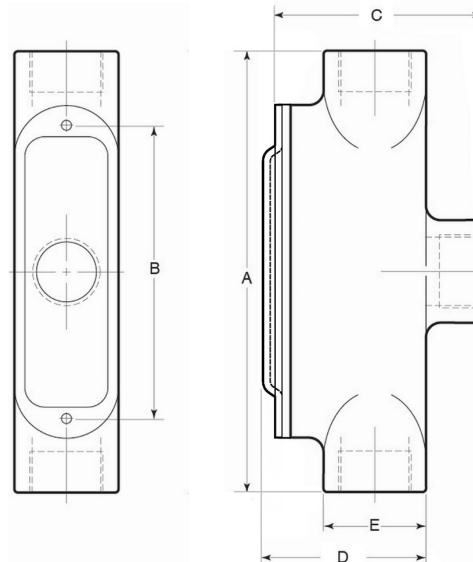


# STAINLESS STEEL TB CONDUIT BODIES



## APPLICATION

- Designed to make 90° turns, change the route of conduit, and/or to make wiring pulls and connections
- Flat back design provides extra wiring capacity
- Form 8
- Offered in seven configurations: C, LB, LL, LR, T, TB, X
- Supplied complete with cover, gasket and Type 316 SS screws
- Manufactured in stainless steel to help prevent corrosion
- Can be installed using ordinary hand tools and require little maintenance or repair
- Provided in a bright, polished finish that does not require touch up or painting



## PRODUCT DETAILS

### Material:

- Body: CF8M (316 SS)
- Cover, Screws: 316 SS
- Gasket: Neoprene

### Country of Origin:

100% Made in USA

### UL File Number:

QCIT.E300676  
(Standard 514A)

### Canada UL File Number:

DWTT7.E300676  
(Standard 514A)

Part Number	Size	Weight/ Each (lbs.)	Dimension (in.)				
			A	B	C	D	E
7050TB	½ in.	2	6.00	3.50	2.97	2.01	1.18
7075TB	¾ in.	3	6.81	4.31	3.31	2.35	1.50
7100TB	1 in.	4	8.00	5.00	3.79	2.63	1.75
7125TB	1-¼ in.	6	9.13	6.00	4.06	2.86	2.14
7150TB	1-½ in.	6	9.81	6.58	4.28	3.15	2.30
7200TB	2 in.	9	12.13	8.50	5.09	3.80	2.75

