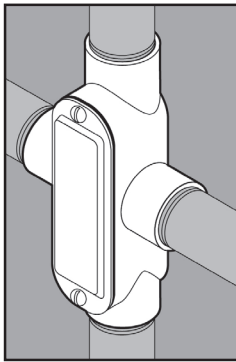
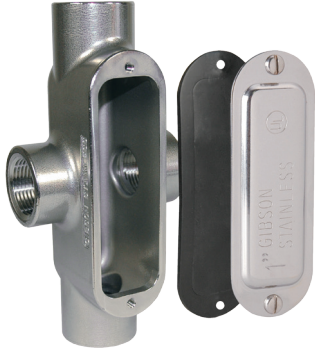


STAINLESS STEEL X CONDUIT BODIES



APPLICATION

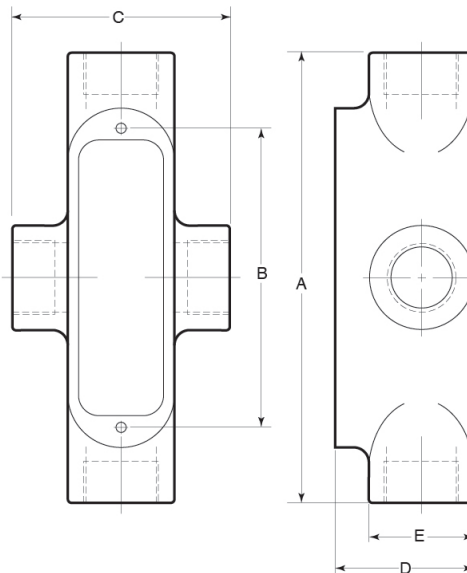
- Designed to make 90° turns, change the route of conduit, and/or to make wiring pulls and connections
- Flat back design provides extra wiring capacity
- Form 8
- Offered in seven configurations: C, LB, LL, LR, T, TB, X
- Supplied complete with cover, gasket and Type 316 SS screws
- Manufactured in stainless steel to help prevent corrosion
- Can be installed using ordinary hand tools and require little maintenance or repair
- Provided in a bright, polished finish that does not require touch up or painting

PRODUCT DETAILS

Material:

- Body: CF8M (316 SS)
- Cover, Screws: 316 SS
- Gasket: Neoprene

Country of Origin: 100%
Made in USA



Part Number	Size	Weight/ Each (lbs.)	Dimension (in.)				
			A	B	C	D	E
7075X	¾ in.	3	6.69	4.31	3.50	2.00	1.50
7100X	1 in.	4	8.00	5.00	4.13	2.30	1.75



© 2024 GIBSON STAINLESS & SPECIALTY, INC. - REV 08/2024

PO BOX 847, GREENSBURG, PA 15601
PHONE: 1-800-945-4316 • FAX: 724-838-1544
WEB: GIBSONSTAINLESS.COM