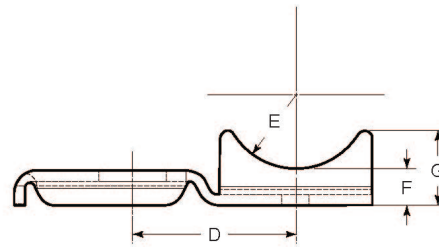
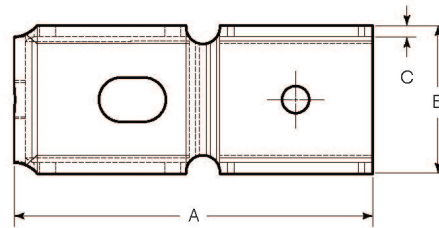
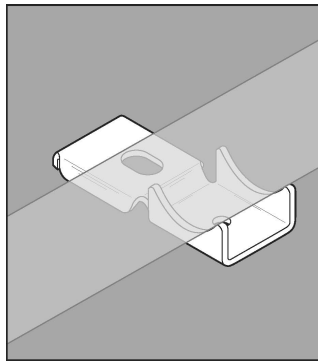


STAINLESS STEEL CLAMP BACK SPACERS

APPLICATION



- Designed for use with rigid conduit and one hole straps
- Used to provide space between conduit and the surface on which it is mounted
- Manufactured in stainless steel to help prevent corrosion
- Can be installed using ordinary hand tools and require little maintenance or repair
- Provided in a bright, polished finish that does not require touch up or painting



PRODUCT DETAILS

Material:

316 SS

Standards:

ASTM A240

Country of Origin:

100% Made in USA

Part Number	Size	Use with Gibson Part #	Dimension (in.)						
			A	B	C	D	E	F	G
CBS3050	½ in.	3050	2.20	1.01	0.08	0.93	0.41	0.25	0.54
CBS3075	¾ in.	3075	2.43	1.01	0.08	1.11	0.50	0.25	0.51
CBS3100	1 in.	3100	2.68	1.13	0.08	1.21	0.66	0.25	0.52
CBS3125	1-¼ in.	3125	3.06	1.14	0.08	1.46	0.83	0.25	0.50
CBS3150	1-½ in.	3150	3.39	1.26	0.08	1.68	0.95	0.25	0.52
CBS3200	2 in.	3200	3.83	1.40	0.08	2.03	1.19	0.25	0.51

NOTE: Please contact factory if larger sizes are needed.



© 2018 GIBSON STAINLESS & SPECIALTY, INC. - REV10/2018

PO BOX 847, GREENSBURG, PA 15601
PHONE: 1-800-945-4316 • FAX: 724-838-1544

WEB: GIBSONSTAINLESS.COM