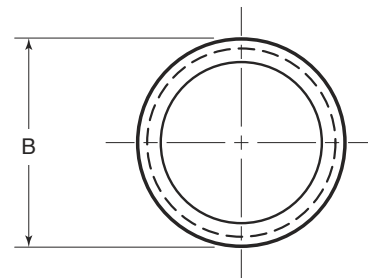
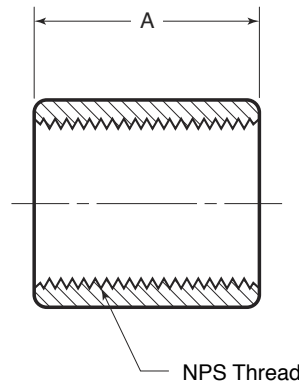
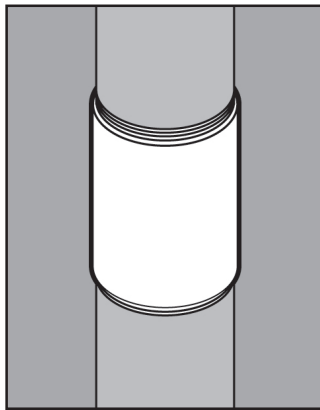


# STAINLESS STEEL COUPLINGS



## APPLICATION

- Provide a means of joining conduit, elbows, nipples, etc.
- Threaded straight through
- Designed for use with NPT threaded conduit products
- Offered in Type 316 SS and Type 304 SS
- Manufactured in stainless steel to help prevent corrosion
- Can be installed using ordinary hand tools and require little maintenance or repair
- Provided in a bright, polished finish that does not require touch up or painting



## PRODUCT DETAILS

**Material:**  
316 SS and 304 SS

**Standards:**  
ASTM A479

**Country of Origin:**  
100% Made in USA

**UL File Number:**  
DYWV.E300683  
(Standard 6A)

**Canada UL File Number:**  
DYWV7.E300683  
(Standard 6A)

| Part Number | Size    | Weight/ 100 (lbs.) | Length "A" (in.) | Outside Diameter "B" (in.) |
|-------------|---------|--------------------|------------------|----------------------------|
| CPL50       | ½ in.   | 20                 | 1.63             | 1.09                       |
| CPL75       | ¾ in.   | 28                 | 1.64             | 1.34                       |
| CPL100      | 1 in.   | 37                 | 1.97             | 1.58                       |
| CPL125      | 1-¼ in. | 56                 | 2.03             | 1.97                       |
| CPL150      | 1-½ in. | 71                 | 2.06             | 2.24                       |
| CPL200      | 2 in.   | 105                | 2.13             | 2.77                       |
| CPL250      | 2-½ in. | 208                | 3.19             | 3.30                       |
| CPL300      | 3 in.   | 206                | 3.31             | 3.83                       |
| CPL400      | 4 in.   | 427                | 3.52             | 5.02                       |

*Type 316 SS part numbers listed above; Type 304 SS products are denoted by adding "-304SS." For example: CPL75-304SS*

