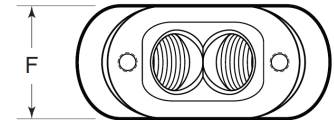
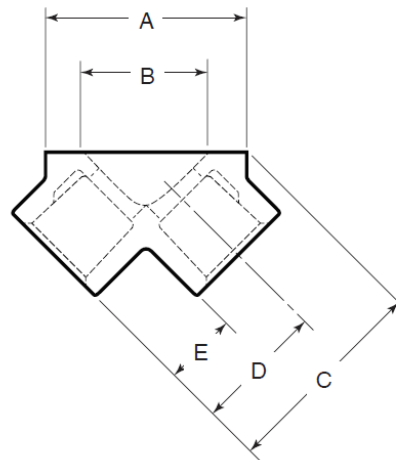
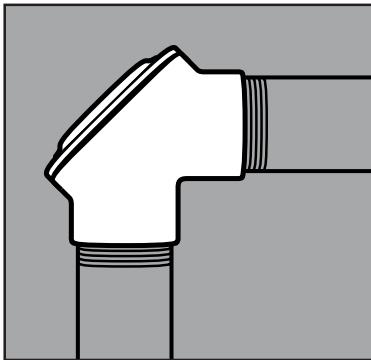


# STAINLESS STEEL PULLING ELBOWS



## APPLICATION

- Designed for use with rigid conduit to make wiring pulls at 90° bends in a conduit system
- Can aid in instances of sharp bends and allow a straight pull in either direction
- Supplied complete with cover, gasket and Type 316 SS screws
- Manufactured in stainless steel to help prevent corrosion
- Can be installed using ordinary hand tools and require little maintenance or repair
- Provided in a bright, polished finish that does not require touch up or painting



## PRODUCT DETAILS

### Material:

- Body: CF8M (316 SS)
- Cover, Screws: 316 SS
- Gasket: Neoprene

**Country of Origin:** 100%  
Made in USA

Part Number	Size	Weight/ Each (lbs.)	Dimension (in.)					
			A	B	C	D	E	F
PE50	½ in.	0.5	1.95	1.27	2.03	1.27	0.70	1.14
PE75	¾ in.	1	2.31	1.57	2.29	1.40	0.73	1.35
PE100	1 in.	1	2.85	2.01	2.83	1.76	0.93	1.67
PE150	1-½ in.	1.5	3.67	2.77	3.44	2.08	1.00	2.15
PE200	2 in.	2.5	4.65	3.53	4.10	2.39	1.03	2.73

