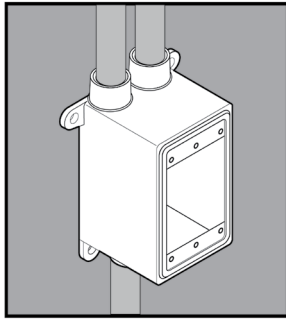


# STAINLESS STEEL FDCC DEVICE BOX



## APPLICATION

- Used to wire devices such as switches and receptacles, act as pull boxes, and/or connect conduit
- Offered in "deep" style, in nine configurations: Single-Gang FD, FDC, FDA, FDS, FDX, FDCT, FDCC and Double-Gang FDDC, FDDX.
- Manufactured in stainless steel to help prevent corrosion
- Can be installed using ordinary hand tools and require little maintenance or repair
- Provided in a bright, polished finish that does not require touch up or painting



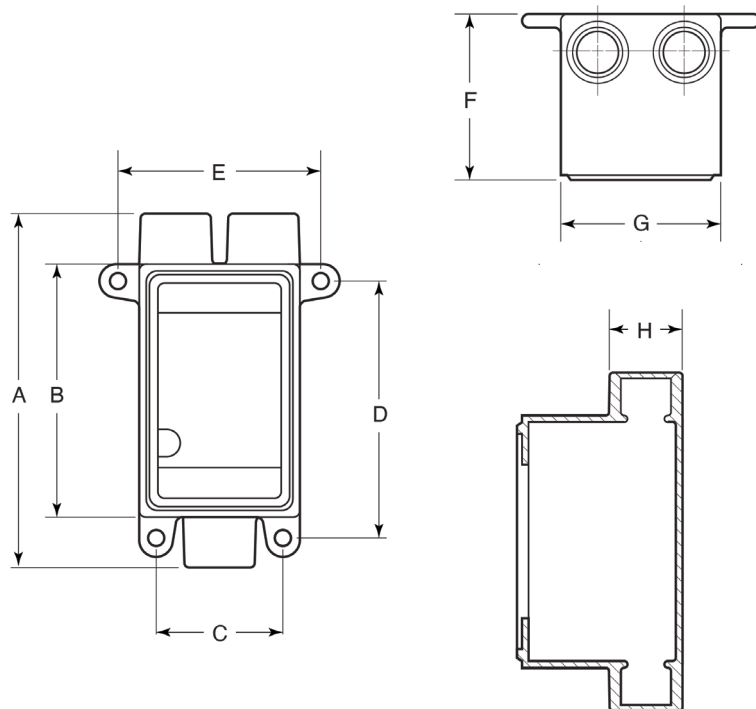
## PRODUCT DETAILS

### Material:

- Body: CF8M (316 SS)
- Grounding Screw: 316 SS

### Country of Origin:

100% Made in USA



Part Number	Size	Weight/ Each (lbs.)	Dimension (in.)							
			A	B	C	D	E	F	G	H
FDCC75	¾ in.	4	6.55	4.67	2.34	4.71	3.67	2.94	2.96	1.34

\* Not yet UL listed



© 2025 GIBSON STAINLESS & SPECIALTY, INC. - REV 08/2025

PO BOX 847, GREENSBURG, PA 15601  
PHONE: 1-800-945-4316 • FAX: 724-838-1544  
WEB: GIBSONSTAINLESS.COM