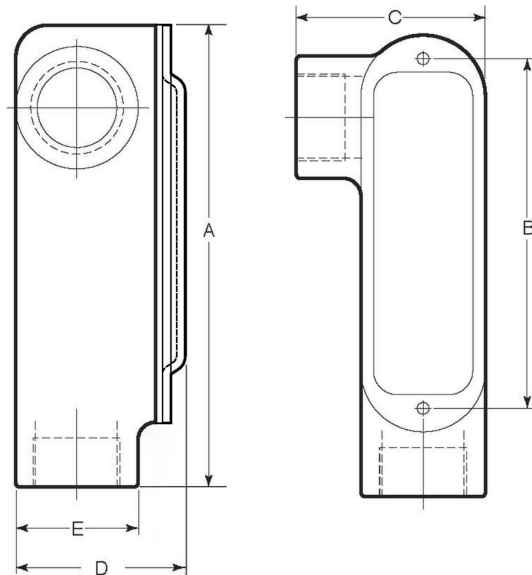
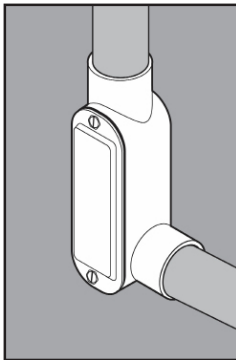


STAINLESS STEEL LR CONDUIT BODIES



APPLICATION

- Designed to make 90° turns, change the route of conduit, and/or to make wiring pulls and connections
- Flat back design provides extra wiring capacity
- Form 8
- Offered in seven configurations: C, LB, LL, LR, T, TB, X
- Supplied complete with cover, gasket and Type 316 SS screws
- Manufactured in stainless steel to help prevent corrosion
- Can be installed using ordinary hand tools and require little maintenance or repair
- Provided in a bright, polished finish that does not require touch up or painting



PRODUCT DETAILS

Material:

- Body: CF8M (316 SS)
- Cover, Screws: 316 SS
- Gasket: Neoprene

Country of Origin:

100% Made in USA

UL File Number:

QCIT.E300676
(Standard 514A)

Canada UL File Number:

DWTT7.E300676
(Standard 514A)

| Part Number | Size | Weight/ Each (lbs.) | Dimension (in.) | | | | |
|-------------|---------|---------------------|-----------------|------|------|------|------|
| | | | A | B | C | D | E |
| 7050LR | ½ in. | 1 | 5.06 | 3.50 | 2.27 | 1.65 | 1.18 |
| 7075LR | ¾ in. | 2 | 5.88 | 4.31 | 2.55 | 1.99 | 1.50 |
| 7100LR | 1 in. | 3 | 6.88 | 5.00 | 2.97 | 2.35 | 1.75 |
| 7125LR | 1-¼ in. | 5 | 9.13 | 6.00 | 3.43 | 2.86 | 2.14 |
| 7150LR | 1-½ in. | 4 | 8.40 | 6.58 | 3.53 | 3.14 | 2.15 |
| 7200LR | 2 in. | 7 | 10.55 | 8.50 | 4.22 | 3.82 | 2.73 |

