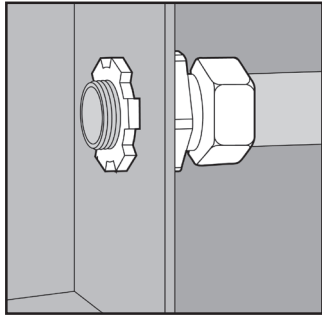
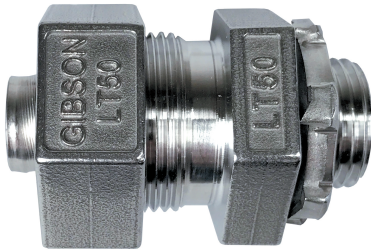
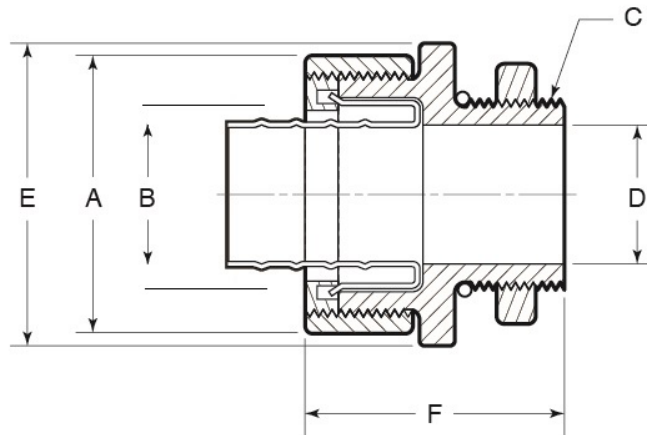


STAINLESS STEEL STRAIGHT LIQUIDTIGHT CONNECTORS



APPLICATION

- Designed for use with liquidtight conduit
- Provide a means of connecting to boxes in wet or dry locations
- Offered in three configurations: Straight, 45°, 90°
- Supplied complete with a Type 316 SS gland nut, polyethylene sealing ring, Type 316 SS ferrule, neoprene sealing gasket, and Type 316 SS locknut
- Type 316 SS inside ferrule provides extra corrosion resistance on inside of fitting (Other inside ferrules made of materials such as carbon steel may corrode easily, effecting the entire fitting.)
- Manufactured in stainless steel to help prevent corrosion
- Can be installed using ordinary hand tools and require little maintenance or repair
- Provided in a bright, polished finish that does not require touch up or painting



PRODUCT DETAILS

Material:

- Body: CF8M (316 SS)
- Locknut: 316 SS
- Sealing Gasket: Neoprene
- Inside Ferrule: 316 SS
- Sealing Ring: Polypropylene
- Nut: CF8M (316 SS)

Country of Origin: 100%
Made in USA

Part Number	Size	Weight/ 100 (lbs.)	Dimension (in.)					
			A	B	C	D	E	F
LT50	½ in.	25	1.56	0.85	½ - 14 NPT	0.62	1.41	1.91
LT75	¾ in.	35	1.70	1.07	¾ - 14 NPT	0.82	1.45	2.07
LT100	1 in.	51	2.06	1.34	1 - 11½ NPT	1.02	1.64	2.31



© 2018 GIBSON STAINLESS & SPECIALTY, INC. - REV 10/2018

PO BOX 847, GREENSBURG, PA 15601
PHONE: 1-800-945-4316 • FAX: 724-838-1544
WEB: GIBSONSTAINLESS.COM